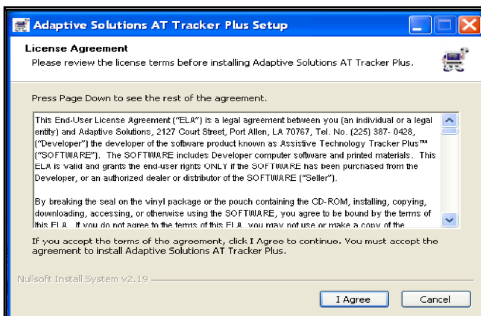


# New Installation Instructions for Assistive Technology Tracker Plus

A new installation process has been developed for Assistive Technology Tracker Plus (ATT+). The installation process will check to see if Microsoft Access Runtime 2000 is installed on your computer. If Runtime 2000 is not present, it will be installed. Runtime 2000 is needed to operate ATT+ and will be used only when ATTP is open. This will not interfere with the Microsoft Access Runtime for Access 2002, 2003 or 2007 if already installed on your computer.

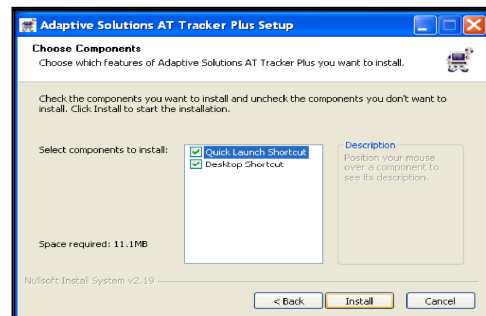
When installing ATT+, please be patient. It takes some time for the actual installation process to start. This is because ATT+ is checking the computer to make sure that the system requirements are present. Follow the onscreen directions to complete installation.

Screen #1:



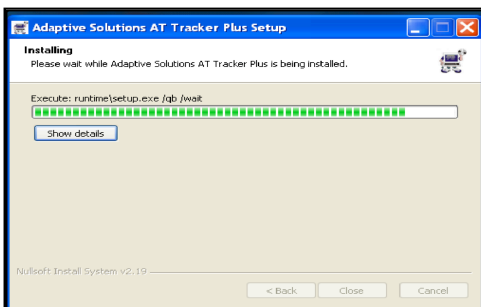
Click "I Agree" to the License Agreement.

Screen #2:

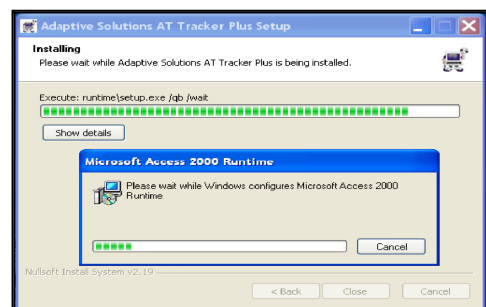


Click "Install".

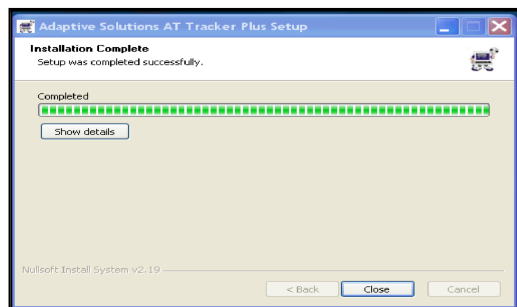
Screen #3:



Screen #4:



Screen #5:



Click "Close".

A shortcut for ATTP+ will be placed on your desktop after installation has been completed. Open ATT+ from your shortcut and type in your assigned password when prompted. Go to your manual page 5 for these instructions.

**!Note!** +If you are upgrading from a present version of AT Tracker or AT Tracker+ you need to add your present database that you are using. If you have installed the new version of AT Tracker+ on a “New” computer you need to go and make a copy of your database in the AT Tracker or AT Tracker+ program file folder. Copy the database on the desktop of your “New” computer. When you open AT Tracker+ and it calls for your “Password” type in “**upgrade**” (Quotes not needed). An upgrade data window will come up and you click on Select File and then a Browse for Computer window will come and you click on your database. (ATTPlusData or ATTSv2.3Data). Click on the “Start” button. When the data import is completed a window will come up that say Import Successful. Click Exit. Now open the AT Tracker+ program. When it ask for your password type in your assigned password. Click on Equipment Inventory, Personal Information, etc. and all your data should be in your new version of AT Tracker+. Your default agency will be the same as you old AT Tracker or AT Tracker+. No need to set your default agency again.

**!Note!** When installing AT Tracker+ for the first time and you do not have any existing data from an older version you should first set your default agency before inputting your data. Go to the Administration Section of the Main Menu and click on System Settings. Setting the agency name should be done with each new installation and when upgrading to a newer version of ATT+. Refer to page 26 of the ATTP manual.

**!Note!** If installing the network version of ATT+ you will need to “Link Data” after adding your default agency.

### **Link Data**

The link data feature is only available on network versions of AT Tracker or AT Tracker+. The purpose of this utility is to re-link the AT Tracker program file to the AT Tracker data file that has been moved to a network drive. Refer to page 30 in your ATT+ manual.

**!Note!** Microsoft recommends that client-server applications like AT Tracker+ get installed on each individual PC workstation with the data located on a shared network drive. Each time you load the ATT+ or Equipment Tracker network version make sure you link your data to the same database on the server.

For technical support contact:

Adaptive Solutions  
Sherion J. Hollingsworth, Owner  
2127 Court Street  
Port Allen, LA 70767  
Tel: (225)387-0428  
Fax: (225)387-6092  
Email: sherry@adaptive-sol.com  
Web: www.adaptive-sol.com

